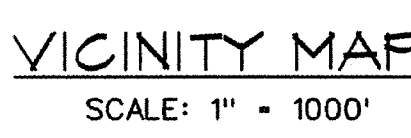


| CURVE DATA | | | | | |
|------------|----------|---------|-----------|---------|---------------------|
| NO. | RADIUS | ARC | DELTA | TANGENT | CHORD |
| C-1 | 675.00' | 158.08' | 13°25'05" | 79.40' | N70°40'20"W 157.72' |
| C-2 | 320.00' | 488.86' | 87°31'50" | 306.50' | N20°11'52"W 442.68' |
| C-3 | 1275.00' | 318.84' | 14°19'41" | 160.26' | N84°32'43"W 318.01' |
| C-4 | 575.00' | 191.93' | 19°07'30" | 96.87' | S78°43'42"W 191.04' |



THE UNDERSIGNED, OWNER OF THE PROPERTY SHOWN HEREON, ADOPTS THIS CONDOMINIUM PLAN PURSUANT TO THE PROVISIONS AND REQUIREMENTS OF THE MARYLAND CONDOMINIUM ACT, REAL PROPERTY ARTICLE, TITLE 11-101 ET. SEQ. OF THE ANNOTATED CODE OF MARYLAND, AND ASSENTS TO THE DESCRIBED PROPERTY BEING SUBJECTED TO SAID CONDOMINIUM.


SURVEYORS CERTIFICATION

I HEREBY CERTIFY THAT THIS CONDOMINIUM PLAT, CONSISTING OF SEVEN (7) SHEETS, SHOWING THE LAND AND BUILDINGS, AS CONSTRUCTED, IS CORRECT. THAT IT IS A CONDOMINIUM PLAT OF A PORTION OF AREA K AS SHOWN ON THE PLAT ENTITLED "SECOND AMENDED PLAT OF THE SOUTHERN PORTION OF ARDENMAN GUARDIAN WHICH BEING LIEU 121 AMONG THE LAND RECORDS OF BALTIMORE COUNTY IN PLAT BOOK S.M. 12, PAGE 34L.

THAT IT IS IN ACCORDANCE WITH THE REQUIREMENTS
OF TITLE II OF THE REAL PROPERTY ARTICLE OF THE
ANNOTATED CODE OF MARYLAND (2003 REPLACEMENT VOLUME,
§6, AMENDED.

I FURTHER CERTIFY THAT THE PLAT, TOGETHER WITH THE APPLICABLE WORDING OF THE DECLARATION, IS A CORRECT REPRESENTATION OF THE CONDOMINIUM DESCRIBED AND THE IDENTIFICATION AND LOCATION OF EACH UNIT AND THE COMMON ELEMENTS AS CONSTRUCTED CAN BE DETERMINED FROM THEM

I FURTHER CERTIFY THAT THE LAND AREA DESIGNATED
HEREON AS "PHASE 2 2700/2800 STONECLIFF CONDOMINIUM
ASSOCIATION, INC." IS 41,522 SQUARE FEET OR 0.9532 ACRES
OF LAND.


 CHARLES S. RUZICKA
 REGISTERED PROFESSIONAL LAND SURVEYOR
 MARYLAND LICENSE NO. 21169

7-20-11
 DATE

JLE
31-529

| REVISIONS | | | DATE |
|-----------|------|-------------|-------------|
| NO. | DATE | DESCRIPTION | BY |
| | | | 5-26-11 |
| | | | SCALE |
| | | | 1"=100' |
| | | | DESIGNED BY |
| | | | R.L.C. |
| | | | DRAWN BY |
| | | | M.J.N. |

PLAT OF CONDOMINIUM SUBDIVISION
#2700 BUILDING LOCATION PLAN
PHASE 2
2700 / 2800 STONECLIFF
CONDOMINIUM ASSOCIATION, INC.
PORTION OF PLAT S.M. 78 - 541
THIRD ELECTION DISTRICT, BALTIMORE COUNTY, MARYLAND

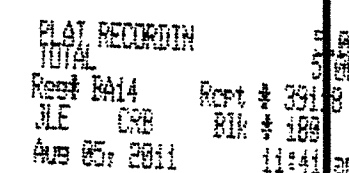
DRAWING NO.

SHEET 1 OF 7

KCI JOB NUMBER

01053918QB

MSA SSu 1265 1840-1
p189005



Test:

JLE
31-530

| | |
|--|---|
| PLAT OF CONDOMINIUM SUBDIVISION #2700 BUILDING GARAGE LEVEL PHASE 2 2700 / 2800 STONECLIFF CONDOMINIUM ASSOCIATION, INC. PORTION OF PLAT S.M. 78 - 341 THIRD ELECTION DISTRICT | DRAWING NO. SHEET 2 OF 7 KCT JOB NUMBER 01053918GB |
|--|---|

P189006

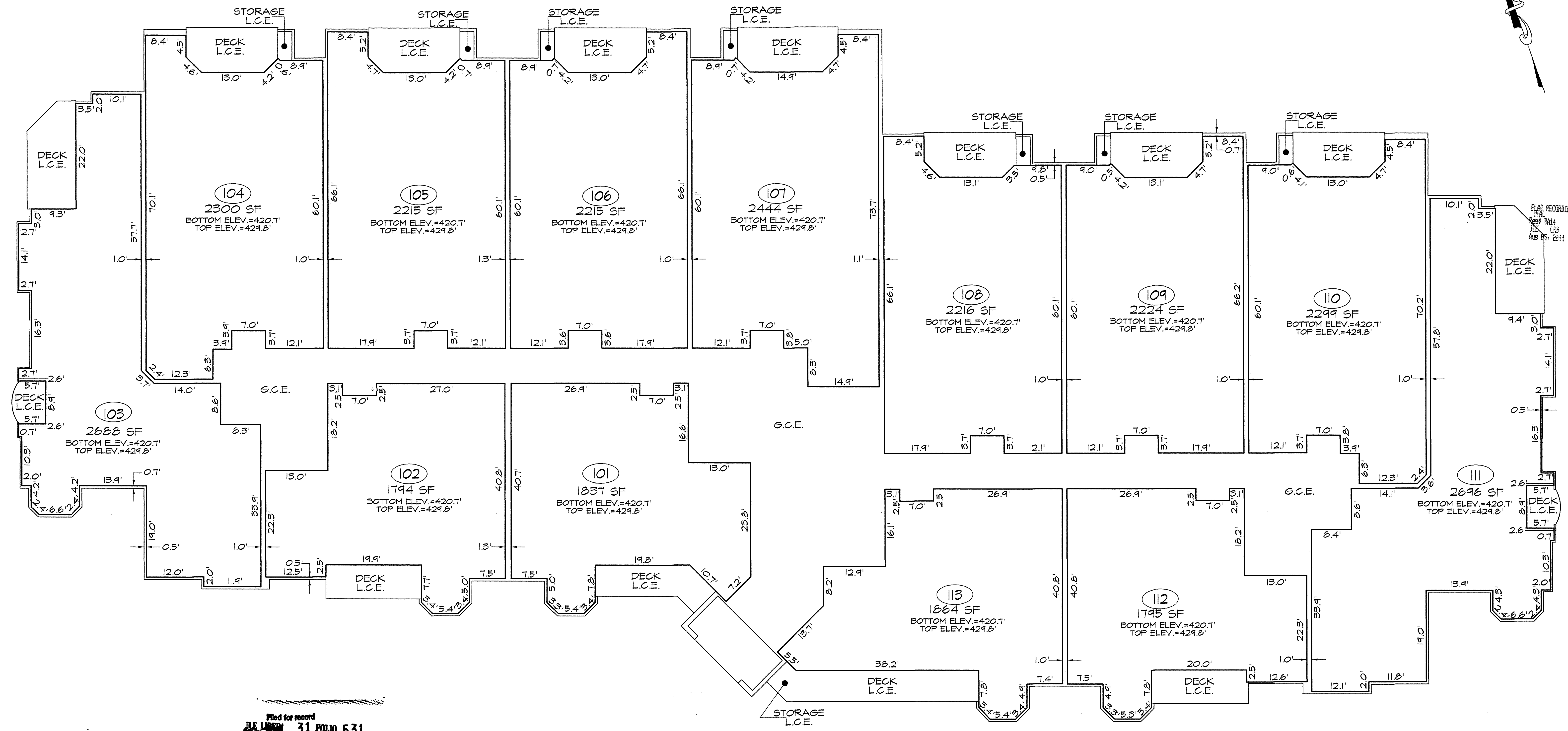
1
2
3
4
5
6
7
8
9
10
11
12
13
14
15
16
17
18
19
20
21
22
23
24
25
26
27
28
29
30
31
32
33
34
35
36
37
38
39
40
41
42
43
44
45
46
47
48
49
50
51
52
53
54
55
56
57
58
59
60
61
62
63
64
65
66
67
68
69
70
71
72
73
74
75
76
77
78
79
80
81
82
83
84
85
86
87
88
89
90
91
92
93
94
95
96
97
98
99
100

BALTIMORE COUNTY CIRCUIT COURT (Condominium Plats, BA) Condominium Book JLE 31, pp. 529-535, MSA, S1285, 1840. Date available 2011/08/05. Printed 05/30/2016.

PLOTTED: 12:41 PM on Wednesday, July 20, 2011
BY: Robert Crist Division: P092 Survey GMA Emp
FILE: M:\2008\0708\315\Drawings\Building K-1\Condo K-1-FIRST FLOOR.dgn

Filed for record
JLE LIBER 31 FOLIO 531
Date AUG 5 2011
Test:
Julie L. Enson
Clerk

JLE
31-531



LEGEND
UNIT BOUNDARY
G.C.E. GENERAL COMMON ELEMENT
L.C.E. LIMITED COMMON ELEMENT
SF SQUARE FEET

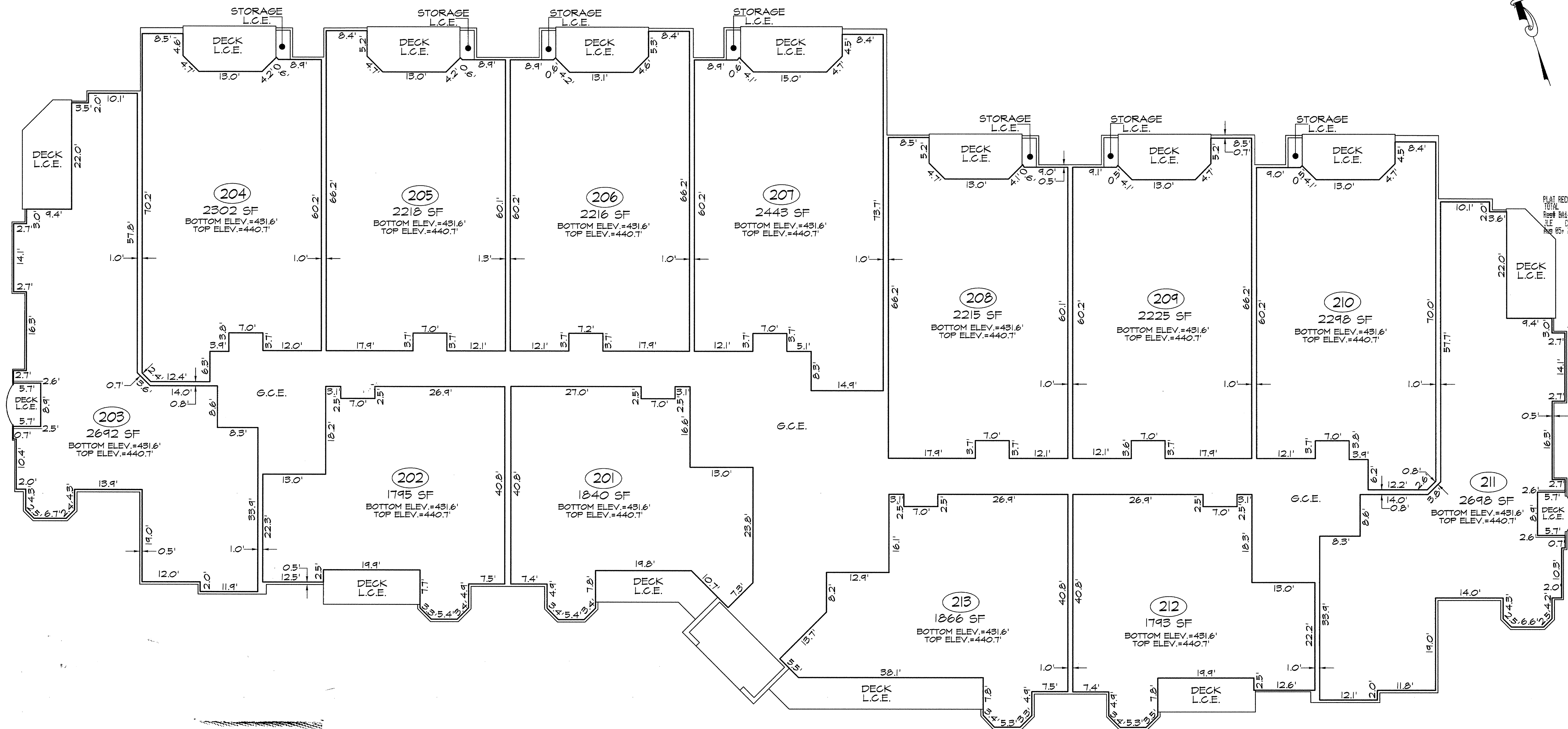
| | | | | | | | | | |
|--|--|--|--|---|--|---|---|--|---|
| KCI TECHNOLOGIES ENGINEERS PLANNERS SCIENTISTS CONSTRUCTION MANAGERS 936 RIDGEBROOK ROAD SPARKS, MARYLAND 21152 TELEPHONE: (410) 316-7800 FAX: (410) 316-7818 | | | | REVISIONS NO. DATE DESCRIPTION BY | | DATE 5-26-11 SCALE 1"=10' DESIGNED BY R.L.C. DRAWN BY R.L.C. | PLAT OF CONDOMINIUM SUBDIVISION #2700 BUILDING FIRST FLOOR CONDOMINIUM UNITS PHASE 2 2700 / 2800 STONECLIFF CONDOMINIUM ASSOCIATION, INC. PORTION OF PLAT S.M. 78 - 341 THIRD ELECTION DISTRICT BALTIMORE COUNTY, MARYLAND | | DRAWING NO. SHEET 3 OF 7 KCI JOB NUMBER 0105391808 |
|--|--|--|--|---|--|---|---|--|---|

MSA SSM 1840.3
P189007

1
2
3
4
5
6
7
8
9

BALTIMORE COUNTY CIRCUIT COURT (Condominium Plats, BA) Condominium Book JLE 31, pp. 525-535, MSA, S1265, 1840. Date available 20110805. Printed 05/30/2016.

PLOTTED: 12:42 PM, on Wednesday, July 20, 2011
FILE: M:\2005\0003318.dwg, drawing: N:\Building, K:\1\Condo\K-1-SECOND FLOOR.dgn



Filed for record
JLE 31 FOLIO 532
Date AUG 5 2011

Test:
Jolie L. Enson
Clerk

JLE
31-532

LEGEND
UNIT BOUNDARY
G.C.E. GENERAL COMMON ELEMENT
L.C.E. LIMITED COMMON ELEMENT
SF SQUARE FEET

KCI
ENGINEERS
PLANNERS
SCIENTISTS
CONSTRUCTION MANAGERS
936 RIDGEBROOK ROAD
SPARKS, MARYLAND 21152
TELEPHONE: (410) 316-7800
FAX: (410) 316-7818

| REVISIONS | | | | DATE |
|-----------|------|-------------|----|---------|
| NO. | DATE | DESCRIPTION | BY | 5-26-11 |
| | | | | |
| | | | | |
| | | | | |
| | | | | |
| | | | | |
| | | | | |
| | | | | |
| | | | | |
| | | | | |

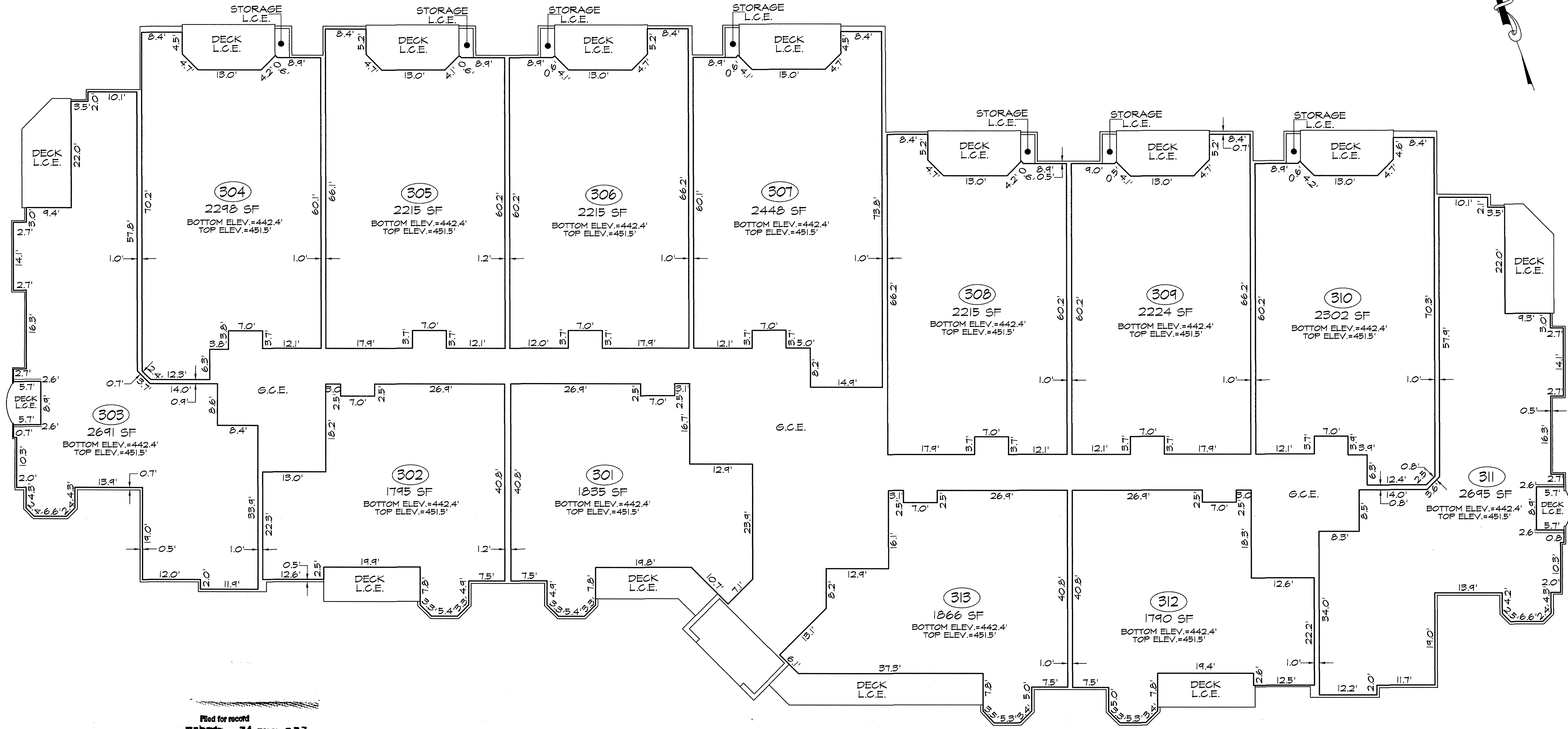
PLAT OF CONDOMINIUM SUBDIVISION
#2700 BUILDING SECOND FLOOR CONDOMINIUM UNITS
PHASE 2
2700 / 2800 STONECLIFF
CONDOMINIUM ASSOCIATION, INC.
PORTION OF PLAT S.M. 78 - 341
THIRD ELECTION DISTRICT BALTIMORE COUNTY, MARYLAND
DRAWING NO.
SHEET 4 OF 7
KCI JOB NUMBER
01053918GB

MSA SSM 1265 1840-4
P189008

1
2
3
4
5
6
7
8
9

BALTIMORE COUNTY CIRCUIT COURT (Condominium Plans, BA) Condominium Book JLE 31, pp. 525-535, MSA, S1265-1840. Date available: 20110805. Printed: 05/30/2016.

PLOTTED: 12:42 PM on Wednesday, July 20, 2011
C:\Users\jle\Documents\31-533\31-533.dwg
FILE: W:\0005\005333\31-533.dwg



Filed for record
JLE 31 FOLIO 533
Date AUG 5 2011
Test:
Julie L. Enson
Clerk

JLE
31-533

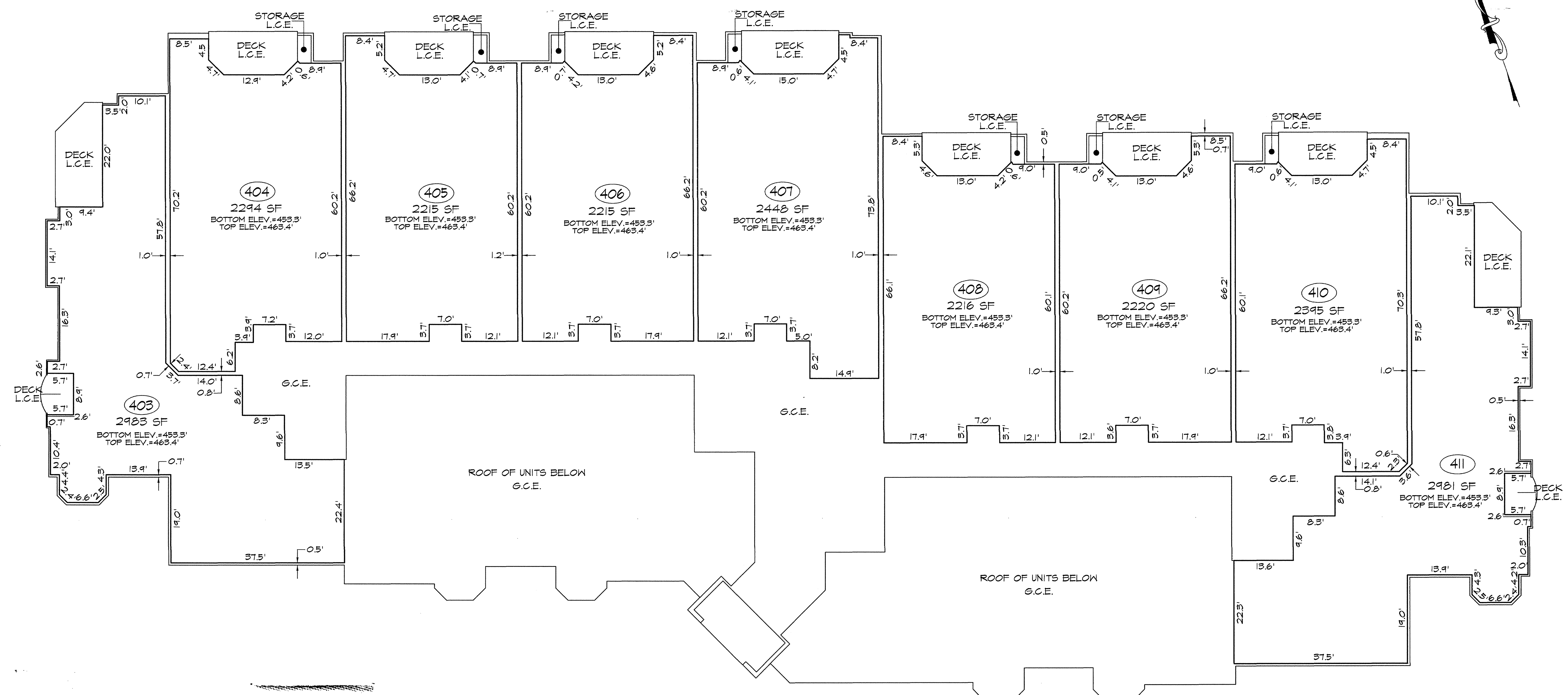
LEGEND
UNIT BOUNDARY
G.C.E. GENERAL COMMON ELEMENT
L.C.E. LIMITED COMMON ELEMENT
SF SQUARE FEET

| | | | | |
|--------------------------------|---|-----------|--------------------|-----------------------|
| KCI TECHNOLOGIES | ENGINEERS PLANNERS SCIENTISTS CONSTRUCTION MANAGERS | REVISIONS | | DATE 5-26-11 |
| | 936 RIDGEBROOK ROAD SPARKS, MARYLAND 21152 TELEPHONE: (410) 316-7800 FAX: (410) 316-7818 | NO. | DATE | DESCRIPTION |
| | | | | BY |
| | | | | SCALE 1"=10' |
| | | | | DESIGNED BY R.L.C. |
| | | | DRAWN BY M.J.W. | |

PLAT OF CONDOMINIUM SUBDIVISION
#2700 BUILDING THIRD FLOOR CONDOMINIUM UNITS
PHASE 2
2700 / 2800 STONECLIFF
CONDOMINIUM ASSOCIATION, INC.
PORTION OF PLAT S.M. 18 - 341
THIRD ELECTION DISTRICT BALTIMORE COUNTY, MARYLAND

DRAWING NO.
SHEET 5 OF 7
KCI JOB NUMBER
0105391803


MSA SSA 1265 1840-5
P189009



Filed for record
31 FOLIO 534
Date AUG 5 2011
Test:
Jolie L. Enson
Clerk

JLE
31-534

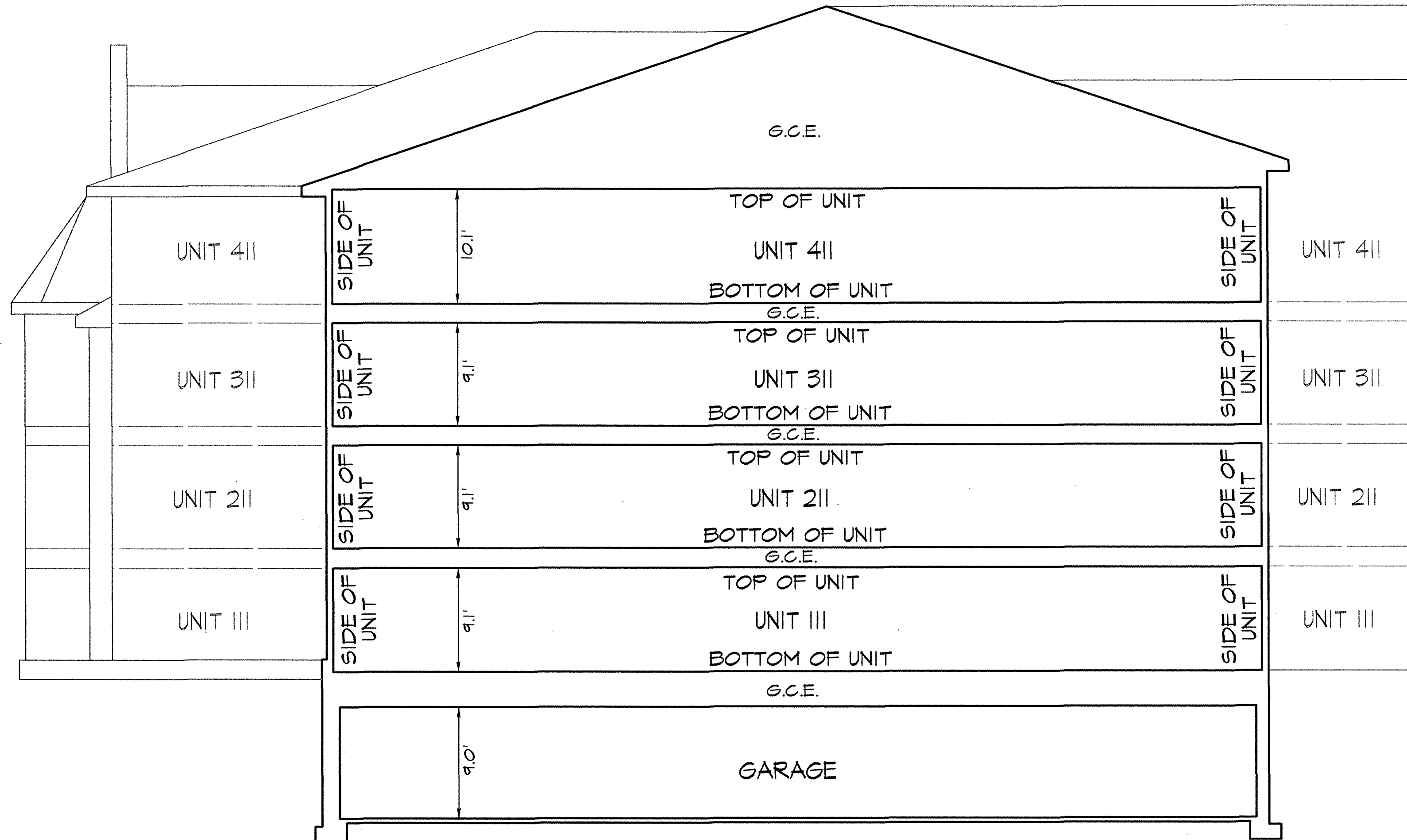
LEGEND
UNIT BOUNDARY
G.C.E. GENERAL COMMON ELEMENT
L.C.E. LIMITED COMMON ELEMENT
SF SQUARE FEET

| | | | | | | | | | | | |
|--|---|-----------|------|-------------|------|---------|-----------------|-----------------------|--------------------|---|---|
|  KCI TECHNOLOGIES | ENGINEERS PLANNERS SCIENTISTS CONSTRUCTION MANAGERS 936 RIDGEBROOK ROAD SPARKS, MARYLAND 21152 TELEPHONE: (410) 316-7800 FAX: (410) 316-7818 | REVISIONS | | | DATE | 5-26-11 | SCALE 1"=10' | DESIGNED BY R.L.C. | DRAWN BY M.J.W. | PLAT OF CONDOMINIUM SUBDIVISION #2700 BUILDING FOURTH FLOOR CONDOMINIUM UNITS PHASE 2 2700 / 2800 STONECLIFF CONDOMINIUM ASSOCIATION, INC. PORTION OF PLAT S.M. 78 - 341 THIRD ELECTION DISTRICT BALTIMORE COUNTY, MARYLAND | DRAWING NO. SHEET 6 OF 7 KCI JOB NUMBER 010534180B |
| | | NO. | DATE | DESCRIPTION | BY | | | | | | |

PLAT RECORDING
TOTAL
RECEIVED
JLE
AUG 05 2011

MSA SSN 1265 1840-6
P189010

1
2
3
4
5
6



Filed for record
JLE 31 FOLIO 535
Date AUG 5 2011

Test:
Julie L. Enson
Clerk

JLE
31-535

TYPICAL SECTION
NOT TO SCALE

KCI
TECHNOLOGIES
ENGINEERS
PLANNERS
SCIENTISTS
CONSTRUCTION MANAGERS
936 RIDGEBROOK ROAD
SPARKS, MARYLAND 21152
TELEPHONE: (410) 316-7800
FAX: (410) 316-7818

| REVISIONS | | | | DATE |
|-----------|------|-------------|----|---------|
| NO. | DATE | DESCRIPTION | BY | 5-26-11 |
| | | | | |
| | | | | |
| | | | | |
| | | | | |
| | | | | |
| | | | | |
| | | | | |
| | | | | |
| | | | | |

PLAT OF CONDOMINIUM SUBDIVISION
#2700 BUILDING TYPICAL SECTION
PHASE 2
2700 / 2800 STONECLIFF
CONDOMINIUM ASSOCIATION, INC.
PORTION OF PLAT S.M. 78 - 341
THIRD ELECTION DISTRICT BALTIMORE COUNTY, MARYLAND

DRAWING NO.
SHEET 7 OF 7
KCI JOB NUMBER
01053918GB

PLAT RECORD
JLE 31 FOLIO 535
Date AUG 5 2011

MSA 35a 1240 1840-7

P18A011